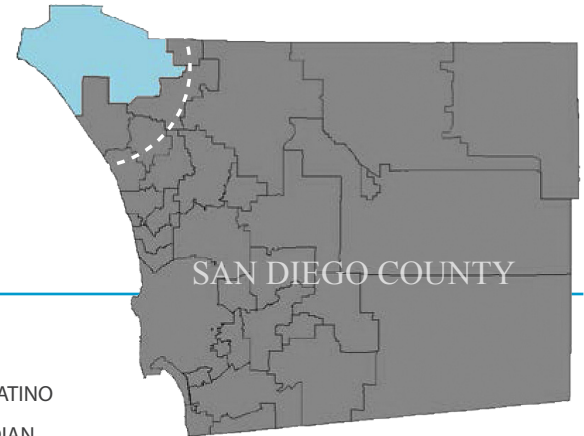
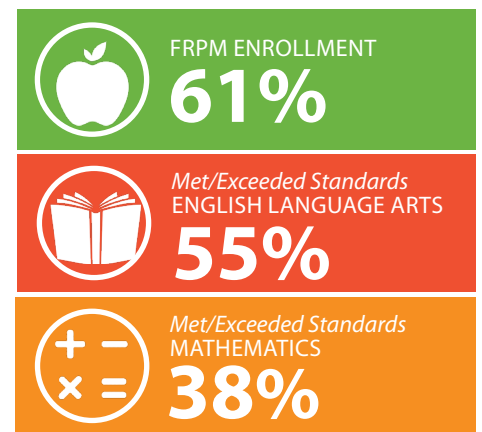
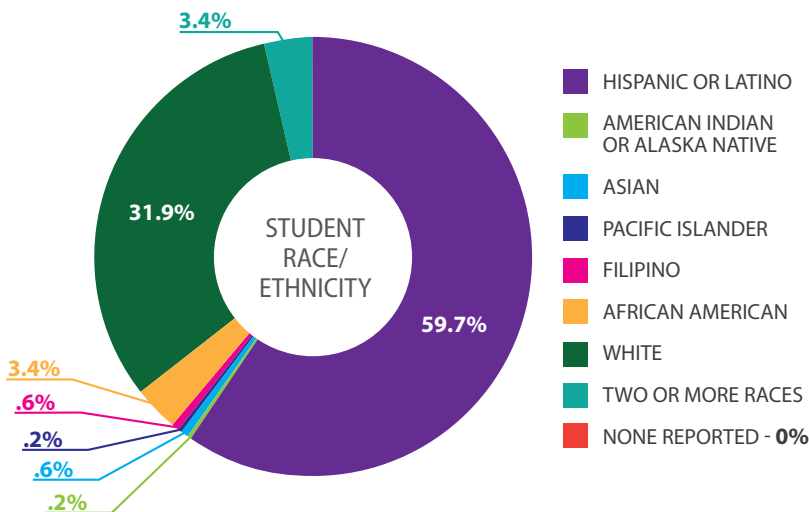


# FALLBROOK UNION ELEMENTARY SCHOOL

Fallbrook Union Elementary School District is a rural district located 40 miles north of San Diego. The K-8 district serves the communities of Fallbrook, De Luz, Rainbow, some unincorporated areas of North County, and the U.S. Marine Corps Base at Camp Pendleton.



## STUDENT DEMOGRAPHICS



## DISTRICT SNAPSHOT

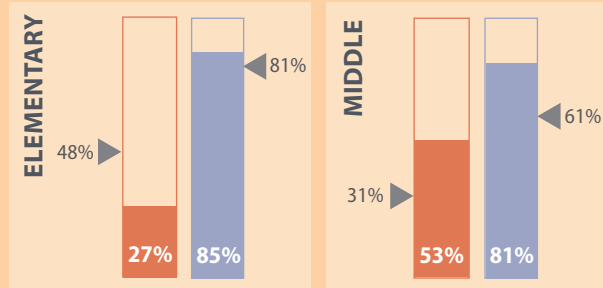
SCHOOLS IN DISTRICT CLAIMING FREE & REDUCED PRICE MEALS (FRPM)*		ELEM	MIDDLE	HIGH	CHARTER	TOTAL
CDE 2015-2016 SY	Number of Schools Claiming FRPM Reimbursement*	6	1			7
	Number of Students in these Schools	3,642	807			4,449
	Number of Students Enrolled in FRPM	2,155	559			2,714
	Percentage of Students Enrolled in FRPM	59%	69%			61%
CDE 2016-2017 SY	<input type="checkbox"/> Schools with Community Eligibility Provision (CEP)	0	0			0
	<input type="checkbox"/> Schools with Provision 2	0	0			0
	<input checked="" type="checkbox"/> Schools Eligible but not Participating in CEP or Provision 2	2	0			2
	Number of Schools with Pantry or Food Distribution	1	0			1
Number of Schools with Backpack Program		1	0			1

\* The following school types are excluded from this analysis: Alternative Schools of Choice, Continuation High Schools, County Community, District Community Day Schools, Juvenile Court Schools, Opportunity Schools, Preschool, Special Education Schools (Public), State Special Schools, Youth Authority Facilities. Analysis includes 90% of FRPM-enrolled students in county.

## DISTRICT

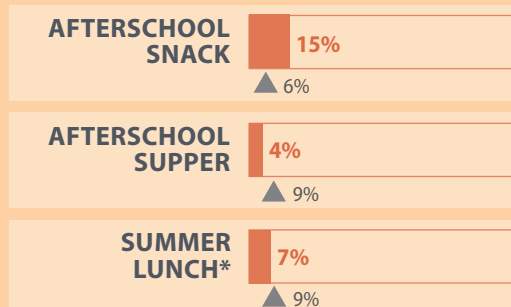
### Percentage of FRPM-Enrolled Kids Eating **SCHOOL BREAKFAST** (compared to those eating school lunch)

■ BREAKFAST ■ LUNCH ◀▶ COUNTYWIDE COMPARISON

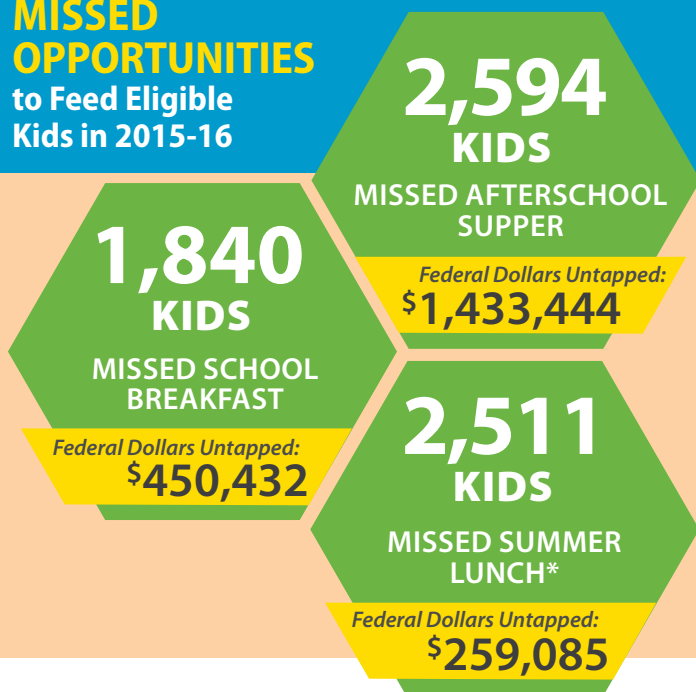


### Percentage of FRPM-Enrolled Kids Eating **AFTERSCHOOL & SUMMER MEALS**

■ DISTRICT + COMMUNITY ORGS ▲ COUNTYWIDE COMPARISON



### MISSED OPPORTUNITIES to Feed Eligible Kids in 2015-16



## ANALYSIS

### SCHOOL BREAKFAST

- ◆ **Fallbrook Union Elementary School District (FUESD)** has 2 elementary schools that are eligible for Provision 2 and could be serving *universal free meals*.
- ◆ Lunch participation is above county average at the elementary and middle schools, but breakfast participation could be improved, especially at the elementary level.
- ◆ Given the rural nature of this district and its high lunch participation, *Breakfast After the Bell* is highly recommended to ensure children with long bus rides have ample time to receive and eat school breakfast.
- ◆ *Breakfast in the Classroom* is recommended for the schools eligible for Provision 2. The *Grab n' Go* breakfast model (served before or after the bell) would increase participation at the other schools.

### AFTERSCHOOL & SUMMER MEALS

- ◆ FUESD provides afterschool snacks through the *National School Lunch Program*. If the district became a CACFP sponsor, they could provide the more substantial supper meal during afterschool programs and before long bus rides home.
- ◆ **Boys & Girls Clubs of North County** is CACFP sponsor and provides afterschool supper at the Ingold Clubhouse (their main site).
- ◆ FUESD has started serving summer meals in the past few years and has been working on innovative outreach models to increase participation, such as partnering with local affordable housing developments and the library to raise awareness about the program among residents.
- ◆ Additional school-based food distributions are recommended.

\* Includes summer supper.